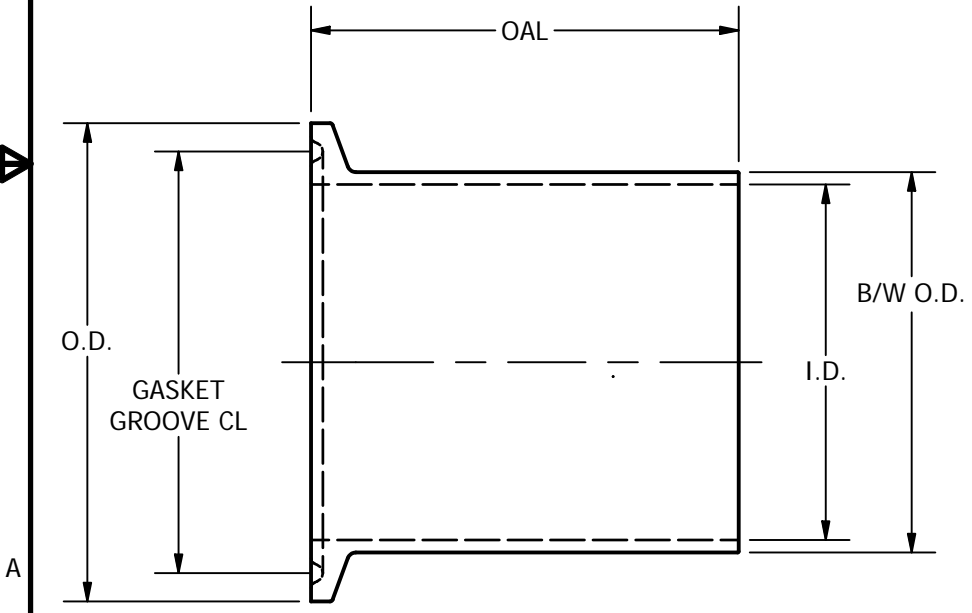
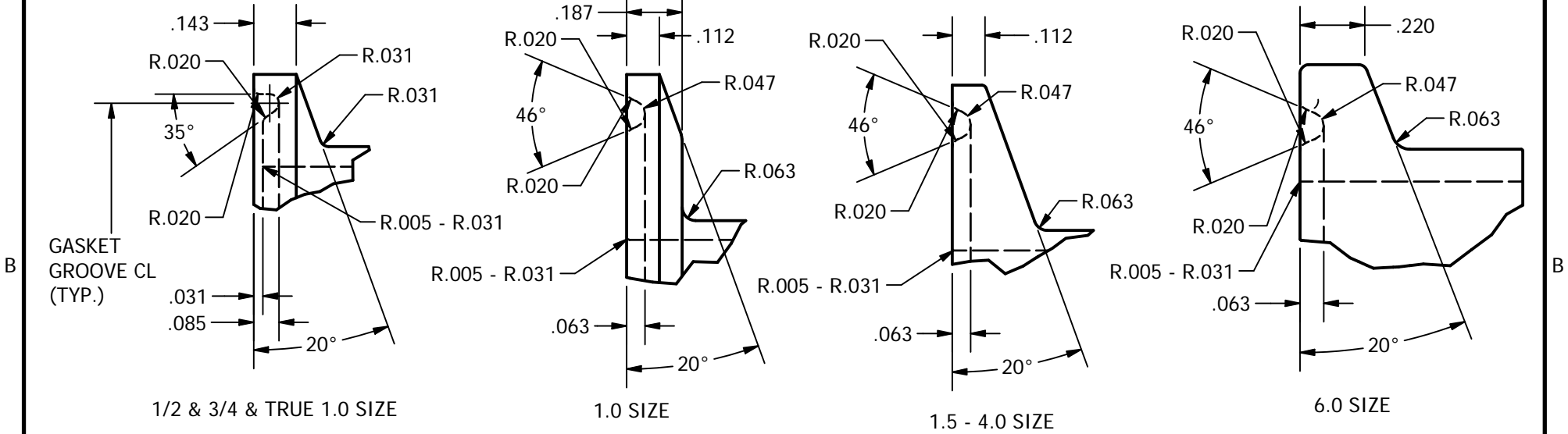


2

1



Size	OD	OAL	GASKET GROOVE CL	B/W OD	I.D.	WALL
1/2	.984	1.750	.800	.500	.370	.065
3/4	.984	1.750	.800	.750	.620	.065
TRUE 1	1.339	1.750	1.160	1.000	.870	.065
1	1.984	1.750	1.718	1.000	.870	.065
1-1/2	1.984	1.750	1.718	1.500	1.370	.065
2	2.516	2.250	2.218	2.000	1.870	.065
2-1/2	3.047	2.250	2.781	2.500	2.370	.065
3	3.579	2.250	3.281	3.000	2.870	.065
4	4.682	2.250	4.344	4.000	3.834	.083
6	6.570	3.000	6.176	6.000	5.782	.109

THE SKETCHES ARE FOR REFERENCE ONLY.  
 ACTUAL SHAPE OF THE FERRULES MAY VARY.  
 ALL DIMENSIONS ARE IN INCHES.

TOLERANCES & MATERIAL

REFER TO  
 LATEST ASME-BPE  
 PUBLICATION

**STEEL & O'BRIEN MFG. INC.**

TITLE  
 EXTENDED TANGENT BPE FERRULE STL14AM7

DWG NO: **STL14AM7**

SCALE: NTS

REV

SHEET 1 OF 1

2

1