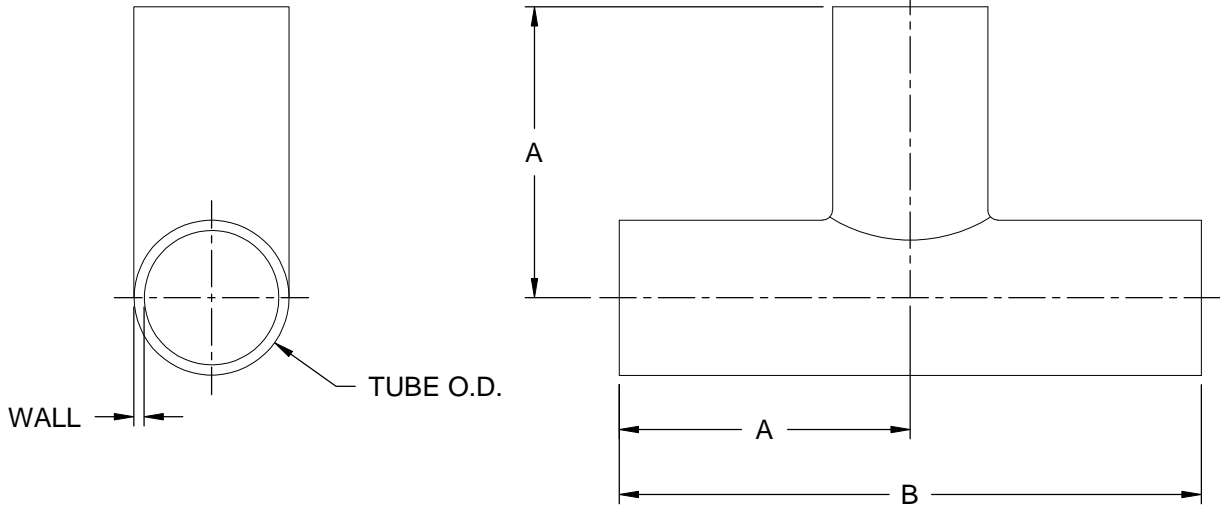


PART NO.	OD SIZE	WALL	A	B
7W-.50	.50" (12.70mm)	0.065	1.875	3.750
7W-.75	.75" (19.05mm)	0.065	1.875	3.750
7W-1	1.0" (25.40mm)	0.065	1.875	3.750
7W-15	1.5" (38.10mm)	0.065	2.250	4.500
7W-2	2.0" (50.80mm)	0.065	3.000	6.000
7W-25	2.5" (63.50mm)	0.065	3.000	6.000
7W-3	3.0" (76.20mm)	0.065	3.250	6.500
7W-4	4.0" (101.60mm)	0.083	3.875	7.750
7W-6	6.0" (152.40mm)	0.109	5.000	10.000

REVISIONS			
REV	DESCRIPTION	DATE	APPROVED
1	ADDED 6" SIZE	08/08/13	RNC

NOTES:
1. PARTS TO CONFORM TO S&O QUALITY STANDARDS QS121



7W-XX-X-XXX

TUBE O.D. SIZE:

- .50 = 1/2"
- .75 = 3/4"
- 1 = 1"
- 15 = 1-1/2"
- 2 = 2"
- 25 = 2-1/2"
- 3 = 3"
- 4 = 4"
- 6 = 6"

MATERIAL:

- 304 - 304 STAINLESS STEEL
- 316 - 316 STAINLESS STEEL

FINISH:

- 1 UNPOLISHED I.D. / UNPOLISHED O.D. (MILL FINISH)
- 3 POLISHED I.D. (32 Ra) / UNPOLISHED O.D.
- 5 UNPOLISHED I.D. / POLISHED O.D. (32 Ra)
- 7 POLISHED I.D. (32 Ra) / POLISHED O.D. (32 Ra)

DETAIL A: PART NUMBERING FORMAT

MATL.		THE INFORMATION CONTAINED IN THIS DRAWING IS PROPRIETARY AND SHALL NOT BE USED OR DISCLOSED WITHOUT THE PRIOR WRITTEN PERMISSION OF STEEL & O'BRIEN MANUFACTURING INC.		Steel & O'Brien Manufacturing, Inc. 7197 Route 98 Arcade, NY 14009 Tel: 585-492-5800 Fax: 585-492-5812 www.steelobrien.com									
FINISH		UNLESS OTHERWISE NOTED: DO NOT SCALE DRAWING ALL DIMENSIONS ARE GIVEN IN INCHES (MM) BREAK ALL SHARP EDGES R.015 MAX.											
CUST. NO.		DWN BY	J. STEEL	DATE	12/16/2009	DWG. TITLE	7W - BUTT WELD TEE, LONG						
QUOTE/P.O. NO.		CHK BY	J. WOJCIK	DATE	12/16/2009	SIZE	B	PART NO.	SEE DET. A	DWG NO.	7W	REV	-
THIS DRAWING CONFORMS TO ANSI Y14.5 DRAWING STANDARD	TOLERANCES: .X - ±.030 .XX - ±.015 .XXX - ±.005 .XXXX - ±.0005 ANGLES: ±.5°	APPD BY	M. GOLABEK	DATE	12/16/2009	SCALE:	NONE	SHEET 1 OF 1					