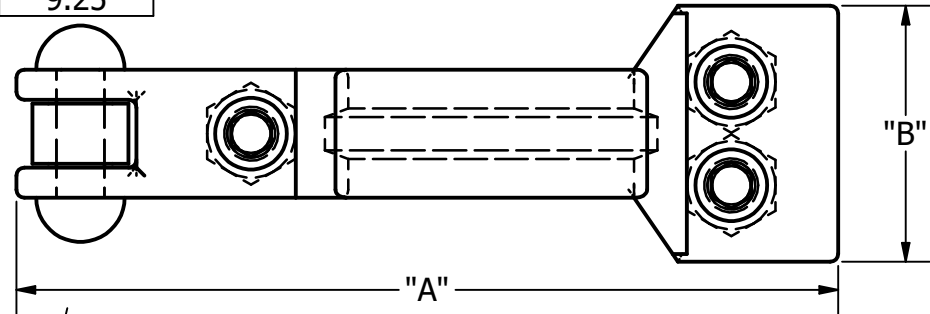


Part No.	"Size"	"Groove Dia."	"A"	"B"	"C"	"D"
13ASME-1	1" - 1 1/2"	2.046	5.71	1.97	3.15	3.35
13ASME-2	2"	2.578	6.42	1.97	3.70	3.82
13ASME-3	3"	3.640	7.99	1.97	4.88	4.53
13ASME-4	4"	4.744	9.17	1.97	6.30	5.32
13ASME-6	6"	6.632	11.06	1.97	8.11	6.30
13ASME-8	8"	8.632	13.11	1.97	10.16	7.28
13ASME-10	10"	10.632	15.16	1.97	12.13	8.27
13ASME-12	12"	12.632	17.05	1.97	14.09	9.25

*FOR GENERAL INFORMATION PURPOSES ONLY
 ACTUAL APPEARANCE MAY VARY.
 *FOR PURCHASING ASK ENGINEERING FOR PRINTS

- NOTE:
- CLAMPS ARE DESIGNED PER ASME SECTION VIII, DIVISION 1, APPENDIX 24
 - PRESSURES BELOW ARE CALCULATED USING ASME HUBS (FERRULES) AND SEALS.
 - EVERY COMPONENT OF THE ASSEMBLY WILL BE INDIVIDUALLY STAMPED WITH HEAT NUMBERS FOR 100% TRACEABILITY.
 - MTR'S ARE TO BE SUPPLIED IN A SINGLE MTR PACKAGE, WITH COVER SHEET LISTING THE COMPONENTS VS. HEAT NUMBERS

Size	PSI	
	@ 70°F	@ 250°F
1" & 1 1/2"	1485	1337
2"	1370	1233
3"	1000	900
4"	874	787
6"	415	374
8"	299	269
10"	161	145
12"	102	92



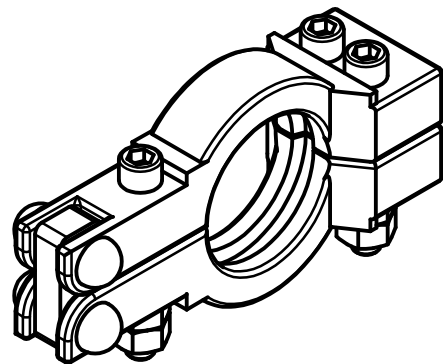
SOCKET HEAD BOLT
(3-TYP.)

"D" Radius

HINGE PLATE

Groove Dia

HEX NUT
(6-TYP.)



TOLERANCES	DRAWN R Canell 5/20/2014	Steel & O'Brien Mfg. Inc.	
	DECIMALS: .XX ±.125 .XXX ±.050 ANGLES: 1°		
		DWG NO: 13ASME	REV
		SCALE: N/A	SHEET 1 OF 1

Part No.	"Size"	"Groove Dia."	"A"	"B"	"C"	"D"
13ASME-1	1" - 1 1/2"	2.046	5.71	1.97	3.15	3.35
13ASME-2	2"	2.578	6.42	1.97	3.70	3.82
13ASME-3	3"	3.640	7.99	1.97	4.88	4.53
13ASME-4	4"	4.744	9.17	1.97	6.30	5.32
13ASME-6	6"	6.632	11.06	1.97	8.11	6.30
13ASME-8	8"	8.632	13.11	1.97	10.16	7.28
13ASME-10	10"	10.632	15.16	1.97	12.13	8.27
13ASME-12	12"	12.632	17.05	1.97	14.09	9.25

Size	@ 70°F	@ 250°F
1" & 1 1/2"	1485	1337
2"	1370	1233
3"	1000	900
4"	874	787
6"	415	374
8"	299	269
10"	161	145
12"	102	92